



Foundation Team

PDG Pat Borowski
District Rotary Foundation Chair

PDG Travis White
Foundation Stewardship Chair

Dave Mercer
Foundation Treasurer

Cheri Maea
Annual Fund Chair

PDG Ronnie Chantker
Paul Harris Society Chair

Suzanne McDougall Major Donor,
Major Gifts & Planned Giving Chair

PDG Sandy Duckworth
Endowment Fund & Triple Crown

Andrew Wade
Global Grants Chair

Wallicia Gill
District Grants Chair

Chris Elliott
Scholarships Chair

Michelle Peters
Vocational Training Team Chair

Cheryl Macias
Rotary Peace Fellowships Chair

Bill Cawley
District Peacebuilder Chair

PDG Chuck Davidson
PolioPlus

Dave Borowski
Foundation Public Image Contact

PDG Juanita Cawley
District TRF Newsletter Senior Editor

Bill Cawley
District TRF Newsletter co-editor

Gordon McNally
President, Rotary International

Rene Laws
District Governor

In this issue:

- 1 Thank you editors, writers , & readers
- 2 DG Rene reports on convention
- 3 Annual Fund Report
- 4 DRFC Report
- 5 The PolioPlus Corner
- 6 PolioPlus Society Report
- 7 Join the PolioPlus Society
- 8 Paul Harris Society
- 9 Join the Paul Harris Society
- 10 Empowering Change
- 11 Top Ten TRF Giving Clubs
- 12 TRF Giving Report
- 13 District Foundation Resources

Copyright © 2024
Rotary District 7610
All Rights Reserved

After a nineteen year run (2005-2024), the District 7610 The Rotary Foundation newsletter will be retired with this issue as communicated to the editors by DGE Amelia Stansell

Thank you to the editors who worked tirelessly each month year after year in publishing the articles of our contributors, editing copy for interest and readability, and seeking out information from TRF and other sources to educate Rotarians in their understanding and appreciation of our world class Rotary Foundation.

PDG Juanita Cawley,
final editor




PDG Sandy Duckworth,
first editor



Long-time major contributors

District TRF
newsletter editors
2005-2024



Bill Cawley



PDG Travis White



PDG Chuck Davidson



Peter Anderson



Jim Holcomb



Suzanne McDougall



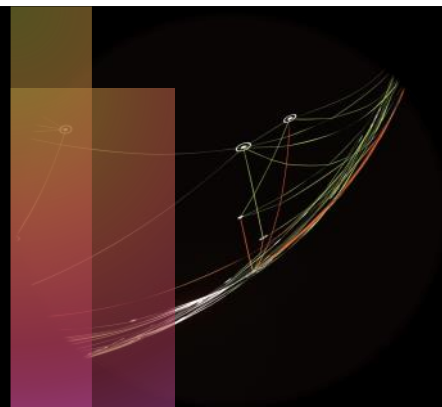
Scott Mills



Michael Arietti

**Thank you
to our
dedicated
readers!**

It was a labor of love,
but you were our
inspiration.



Nothing Gold Can Stay by Robert Frost

Nature's first green is gold,
Her hardest hue to hold.

Her early leaf's a flower;
but only so an hour.

When leaf subsides to leaf.
So Eden sank to grief,

So dawn goes down today.
Nothing gold can stay.

DG Rene` shares her thoughts from the RI Convention—Singapore

While attending the recent 2024 Rotary International Convention in Singapore, I learned how pivotal The Rotary Foundation is in promoting peace by funding scholarships, training, and projects that address the root causes of conflict, such as poverty, lack of education, and inequality, and this commitment by thoughtful donors and The Board of Trustees was well emphasized. Keynote speeches, panel discussions, and presentations showcased the foundation's successful peace initiatives, including the eight Rotary Peace Centers located at universities across the globe. Incoming Rotary International President Stephanie Urchick highlighted our mission of peace, stating, "Peace is at the heart of Rotary's mission, and through our collective efforts, we can create a more harmonious and understanding world."



Looking ahead, they said all were encouraged to participate in peace conferences or summits in or near our clubs, districts or zones, and everyone was invited to join RI leaders in Turkey for the 2025 Presidential Peace Conference February 20-22, and spread the word! They also reminded us to plan to attend the next Rotary International Convention, taking place in Calgary Canada, June 21-25, 2025, to continue engaging with other members, and to increase

our knowledge and understanding about Rotary's peacebuilding efforts.

Additionally, I'd like to take this time to remind you all that if you intend to support the 2023-24 Rotary year, please ensure any final donations are made on/before mid-June, 2024. Sooner is better to help alleviate any backlog, and to that point, electronic payment or setting up and using Rotary Direct is the easiest and most efficient way to donate once, or monthly, and have contributions added to your and your club's donation record.

Click on the link provided and start giving to TRF the easy way!

[RotaryDirectForm.pdf \(rotaryor.org\)](#)



Annual Fund Report—Ending the year strong



Cheri Maea

Annual Fund Chair

cmaea2000@gmail.com

I would like to take a moment and thank you all for your interest in The Rotary Foundation and in the Annual Fund. The goal this year was to highlight the Annual Fund-SHARE its importance and to help all clubs to understand how, when and where to establish and enter goals. Below you will see where we are in June and I am excited to announce that we have reached 143.7% of entered goals. The number of clubs who have met or exceeded their goal as of June 1 is 42. This is outstanding. Although overall giving is down, I believe setting goals has allowed clubs to have something to reach for.

Turning towards next year, I am excited to announce that DG Rene' Laws will be taking on the the challenge of the Annual Fund-SHARE chair role and I will remain ready to assist her. I don't have to tell you how focused and passionate she is, so I am looking forward to where her knowledge and dedication will take us.

Thank you for your support of me and our Rotary Foundation.

Yours in Rotary Service,

Cheri

	Number of Members	Annual Fund					Non-Giving Clubs
		Goal	% Goals Received	Total	Per Capita	Goal Achieved	
2023-24	1,874	\$290,005	88.7%	\$416,851	\$222.44	143.7%	2
2022-23	1,864	\$356,925	94.2%	\$501,928	\$269.27	140.6%	0
2021-22	1,994	\$318,700	57.4%	\$972,314	\$487.62	305.1%	0
2020-21	2,057	\$420,170	78.2%	\$556,334	\$270.46	132.4%	1
2019-20	2,116	\$434,248	88.9%	\$525,748	\$248.46	121.1%	0



ROTARY DIRECT

Rotary's recurring giving program

ROTARY DIRECT SAVES...

- ✓ **Time** — Sign up once to give continuous support
- ✓ **Money** — Lower administration costs means more money for programs
- ✓ **Lives** — Give to The Rotary Foundation to do good in the world

There are three ways to enroll in Rotary Direct:

Online: my.rotary.org/en/rotary-direct
By mail: Rotary Direct, 17th Floor, Annual Giving
 One Rotary Center
 1560 Sherman Avenue
 Evanston, IL 60201-3698 USA
By phone: +1-866-976-8279

Manage your recurring giving at any time by signing in to My Rotary and going to Donor Self-Service.



Speaking of next year...remember the Rotary year begins on July 1st. So, now is a good time to begin your monthly giving to TRF through Rotary Direct.

Click on the link provided and start giving to TRF the easy way!

[RotaryDirectForm.pdf \(rotaryor.org\)](#)



End of the Rotary year report

DRFC Pat Borowski



As we close this year, we have some BIG THANK YOUs to make, and a preview of the changes to come.

First, thank you to all who donated to our Rotary Foundation. You understand that our collective giving must be greater than the amount we receive back each year in grants. You appreciate the value of the work Rotarians do through our local and global grants to make the world a better place on a sustainable basis. You have discovered your passion within the work that The Rotary Foundation accomplishes each year with the donations that others before us have given, as well as what we give.

I ask that you share your understanding, appreciation and passion with your Rotary club members, community members, and the organizations that you serve so that they too may walk the path of doing good in the world and join their dollars with ours to make our service impact greater.

Second, a BIG THANK YOU to the District Foundation Team members. You see them at your meetings and listed on the back of the monthly newsletter, along with tracking our district donations and leading clubs' impacts. People accept these positions because they, like most of you, care about the future of Rotary. That future requires that we assure growing memberships to maintain a sustainable organization to support the Service Above Self work that needs to be done. It also requires everyone to step up to take a part in participation and leadership at all levels of Rotary. This is what these team members have given to all of us.

Third, a very special thank you to PDG Juanita Cawley and Bill Cawley editors of the district TRF newsletter. They gave us great material to know, learn and reference. They also gave us the time to evolve this publication into a new, different format in RY 2024/2025, one that many of you have requested.

July 13 Make the Magic Happen event includes two concurrent Foundation programs that will repeat in the afternoon so that all attendees are able to participate in both breakouts. You will receive the RY 2024/2025 schedule of Foundation events and important deadline dates for education and grant submissions. We will also discuss The Art of the Ask; and What Makes Service Projects/Grants Go Right, and What to Avoid so it Doesn't Go Wrong. You will learn more about how your information and achievements in and for The Rotary Foundation will be made known and shared.

Remember, to **Make the Magic Happen** it requires all of us to engage, know and serve. Thank you for RY 2023/2024 and looking forward to our collective accomplishments in the coming year.



Your Report from the PolioPlus Corner

By PDG Chuck Davidson

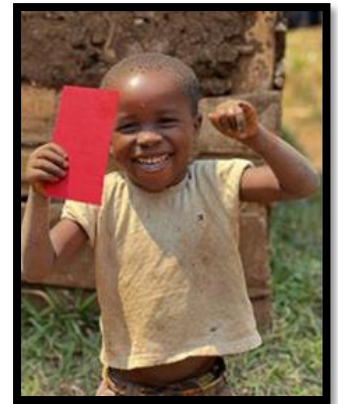
2024 Polio Case Totals. The chart below shows current 2024 case totals for wild polio and vaccine-derived polio. Wild polio cases inched up from last month's 4 to 6. The 61 vaccine-derived cases still compare favorably to the 83 cases at this same time last year.

Goodbye to Polio in Malawi and Mozambique. In May, we celebrated the official closure of the Malawi and Mozambique wild poliovirus outbreaks that occurred 2-3 years ago. Those 9 cases were the only wild polio cases outside of Afghanistan and Pakistan since before 2018, and they were cases directly resulting from one imported from Pakistan in 2021. Once again, this demonstrated that polio is only one international plane ride away. The closure is thanks to unwavering commitment from African governments, health workers, and partners who helped ensure robust surveillance, quality vaccination campaigns, and enhanced community engagement to stop the spread of the virus.



Death of Polio Eradication Champion John Sever. John Sever, an infectious disease specialist and champion of Rotary's polio eradication program, passed away on April 25 at 92 years old. Following John's recommendation in 1979, Rotary embarked on its decades-long effort to eradicate polio globally. His leadership, his pioneering contributions, and his continued resolve were instrumental in paving the way for innovative strategies driving the global campaign to end polio. He was an inspiration to all, and his impact on the efforts towards a polio-free world will be felt for years to come.

Polio "Red-Carded" in the Congo. The Democratic Republic of the Congo (DRC), in collaboration with UNICEF and partners, launched the "Red Card Against Polio" campaign to unite communities in the fight against polio. Inspired by the nation's love for soccer, the campaign garnered widespread community support to "kick polio out of DRC," and no longer allow it to "play" with the lives of children. Clever message! Through mass media messaging and digital platforms, so far the campaign has helped raise awareness among parents, contributing to over 25 million children being reached during a polio vaccination campaign this past November.



Reminder: Health authorities universally use the calendar year, not the Rotary year, in reporting all of their efforts.

Calendar Year	2020	2021	2022	2023	2024 YTD*
Wild Polio Cases	140	6	30	12	6
Vaccine Derived	1,117	702	883	524	61

*As of May 28, 2024 (WP: 3-Pakistan, 3-Afghanistan)

WHY YOUR SUPPORT OF THE POLIO PLUS SOCIETY IS STILL IMPORTANT

PDG Sandy Duckworth, PolioPlus Society Chairman

District 7610 is fortunate to currently have 126 members of the PolioPlus Society, some of whom have pledged more per year than the \$100 annual pledge required for a total pledged annually of \$21,942. Because of the Bill and Melinda Gates \$2 match per \$1 donated, this means that our PolioPlus Society Rotarians, YOU, are responsible for \$65,826 annually to help immunize children all over the world. CONGRATULATIONS!



Did you know that when we talk about PolioPlus, we are not only working to eradicate polio, but the PLUS has many added benefits? The "PLUS" is something else that is provided as a part of the polio eradication campaign! For example, it might be a hand-operated tricycle or access to water. It might be additional medical treatment, bed nets, or soap. A recent study estimates that vitamin A drops given to children at the same time as the polio vaccine have prevented 1.25 million deaths by decreasing susceptibility to infectious diseases.

For instance, while polio is a target, other prevalent diseases like malaria pose significant threats. For example, in Borno malaria claims more lives than all other diseases combined, with a child dying of malaria worldwide every two minutes. Insecticide-treated bed nets, distributed during polio immunization events, help prevent its spread.



Rotary and its partners also distribute soap and organize health camps to treat other conditions. Providing access to clean water, crucial for long-term health, fosters relationships and trust within communities. This is particularly vital in Afghanistan and Pakistan, the last two polio-endemic nations, where the PolioPlus program prioritizes supplying clean water. Communities with clean water sources experience lower disease rates and improved quality of life.



The impact of the polio eradication campaign extends beyond saving lives and preventing paralysis. Health workers and volunteers supported by PolioPlus grants have developed infrastructure for healthcare delivery and data collection, previously nonexistent in many parts of the world. This infrastructure is now utilized to enhance overall healthcare and combat other diseases, demonstrating that PolioPlus's legacy transcends eradicating a single disease—it's about fortifying healthcare systems to provide better access to life-saving interventions for the world's most vulnerable children.

YOU ARE MAKING A DIFFERENCE AND THE CHILDREN OF THE WORLD THANK YOU!



**END
POLIO
NOW**

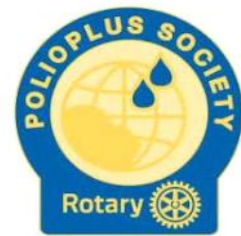
PolioPlus Society Membership Form

District 7610

As a Rotarian and supporter of Polio Eradication, Rotary’s #1 priority, I wish to help Rotary make history by continuing to contribute the below amount each year until the World Health Organization certifies that polio has been fully eradicated from the face of the earth.

Therefore, I hereby commit to making an annual donation to the PolioPlus of The Rotary Foundation as follows: (select one)

- \$100 per year** (minimum amount to become a society member)
- A contribution of \$_____ per year to PolioPlus** (more than \$100)



Society members will receive a PolioPlus Society membership pin and Paul Harris credit (points) plus a beautiful certificate of recognition and thanks. Make your donation online at www.rotary.org/donate and select the Polio Fund or call the Rotary Contact Center – 866-976-8279. Either way, you can set it up as a recurring donation.

PLEASE Email this completed form to PDG Sandy Duckworth – pdg7610@gmail.com

Call if questions: 540-361-1680

POLIOPLUS SOCIETY MEMBERSHIP

I pledge to contribute at least \$100 each year to PolioPlus until the World Health Organization certifies that Polio has been fully eradicated and the world is polio-free. I do this because.....

**UNTIL THE LAST CHILD IS IMMUNIZED
AND THE WORLD IS CERTIFIED POLIO-FREE,
EVERY CHILD IS AT RISK.**

Name: _____

Signature: _____

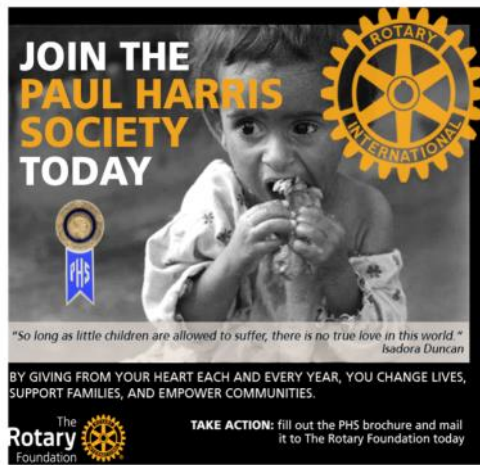
Date: _____

Club Name: _____

Phone #: _____

Email: _____

PolioPlus Society membership certificate and lapel pin will be presented to you at a club meeting. We want you to be properly recognized for your generosity and commitment to polio eradication.



Paul Harris Society Chair
PDG Ronnie Chantker

Have you made your Paul Harris Society donation for this year yet? Now is the time to send in your donation if you have not yet done so. The Rotary International fiscal year will end June 30, 2024.

Please remember your pledge to donate \$1,000 a year as long as you are able.

Members of the Paul Harris Society (PHS) pledge to contribute \$1000 to the PHS every year that they are able to do so. These donations are an important part of The Rotary Foundation's fundraising. Without these donations, The Rotary Foundation would not be able to fund the life changing grants that it implements every year. Rotary's programs in its seven Areas of Focus are helping people all over the world to overcome poverty, war, illness and discrimination that afflict them.

By joining the Paul Harris Society and pledging to donate \$1,000 a year you too will enable The Rotary Foundation to continue supporting the life changing grants that it implements each year. When you become a Paul Harris Society Member, you are presented with a certificate and a chevron as a recognition of your commitment.

If you wish to join the Paul Harris Society, please complete the form on the following page, or go to the online sign up form at [Paul Harris Society | Rotary International](#) for more information. The "Join" button may be found toward the bottom of the page.

I would be happy to attend your club meeting to speak your club about the Paul Harris Society. Please contact me at 301-518-7033 or rchantker@gmail.com.



Doing Good In The World



Basic Education & Literacy



Maternal & Child Health



Peace & Conflict Prevention/Resolution



Disease Prevention & Treatment



Water, Sanitation & Hygiene



Community & Economic Development



Support the Environment

Empowering Change, Funding YOUR Impact

Benefits of Establishing an Endowment through The Rotary Foundation

By: PDG Sandy Duckworth, Endowment Chair

One of its most powerful ways to guarantee sustainable giving is the establishment of an endowment through The Rotary Foundation! This enduring commitment to service and helping others has many benefits, not only for OUR donors but also for the communities we serve.

Global Reach: The Rotary Foundation operates on a global scale, reaching communities in need across continents. By establishing a Rotary endowment, donors can contribute to our diverse range of projects and programs, from providing clean water and sanitation to supporting education and promoting peace, just to name a few.



Efficient Use of Funds: The Rotary Foundation has a proven track record of fiscal responsibility and efficiency, adhering to sector best practices and executing its mission. Demonstrating both strong fiscal health, accountability and transparency, The Rotary Foundation strategically invests endowment funds to optimize returns, ensuring that every dollar donated has the greatest possible impact. For the 15th consecutive year, The Rotary Foundation has earned the prestigious four star rating from **Charity Navigator**, an independent evaluator of charities in the U.S. Only one percent of the organizations Charity Navigator evaluates have received 15 consecutive 4-star evaluations

Tax Benefits: Endowment contributions may offer significant tax benefits for donors, including deductions for charitable contributions and potential estate tax savings. These financial incentives make establishing an endowment through The Rotary Foundation a wise investment in both community impact and personal financial planning.

Information or Questions: check the web page: rotary.org/legacy or contact The Rotary Foundation Planned Giving Team: plannedgiving@rotary.org or 847-866-3100 OR contact our own Laurie Menzel, The Rotary Foundation Major Gifts Officer, Zone 33, Tel: 847-425-5601; Laurie.Menzel@rotary.org

Doing Good in the World by Creating Hope in Those Most in Need

Thank you, to Rotarians in these "Top Ten" clubs who, by their gifts, create hope worldwide.

These clubs lead the way in Annual Fund-SHARE, Polio, and Total Giving in the final month of Rotary Year 2023-24. Congratulations to the Rotarians in these clubs who, by their generosity, are creating hope in the world. **(data as of 6/6/2024)**

Top Ten AF Per Capita Clubs

1. E-Club of Global Peacebuilders (\$1,007.63)
2. Crystal City-Pentagon (\$754.34)
3. Mount Vernon (\$677.78)
4. Dulles International Airport (\$511.83)
5. Annandale (\$487.93)
6. Alexandria West (\$460.00)
7. Stafford (\$457.97)
8. McLean (\$444.21)
9. Leesburg-Daybreak (\$425.83)
10. Springfield (\$373.38)

Top Ten Polio Plus Clubs

1. Herndon-Reston (\$6,425.00)
2. Vienna (\$5,420.00)
3. Fredericksburg (\$4,910.00)
4. Bailey's Crossroads (\$4,550.00)
5. Stafford (\$4,533.00)
6. Gainesville-Haymarket (\$4,225.00)
7. Woodbridge (\$4,200.00)
8. Great Falls (\$3,000.00)
9. McLean (\$2,800.00)
10. Charlottesville (\$2,675.00)

Thank you!

Top Ten Annual Fund Clubs

1. Rappahannock-Fredericksburg (\$36,595.00)
2. Crystal City-Pentagon (\$30,928.00)
3. Alexandria (\$28,666.00)
4. McLean (\$20,878.00)
5. Vienna (\$18,390.00)
6. Great Falls (\$17,511.00)
7. Stafford (\$15,571.00)
8. Bailey's Crossroads (\$15,481.50)
9. E-Club of Global Peacebuilders (\$15,114.50)
10. Fairfax (\$14,498.55)

Top Ten Total Giving Clubs

1. Rappahannock-Fredericksburg (\$48,092.00)
2. Charlottesville (\$39,295.00)
3. Albemarle County (\$35,285.16)
4. Crystal City-Pentagon (\$33,008.00)
5. Alexandria (\$31,818.00)
6. McLean (\$28,178.00)
7. E-Club of Global Peacebuilders (\$27,759.50)
8. Vienna (\$27,010.00)
9. Great Falls (\$21,866.00)
10. Stafford (\$20,104.00)

2023-24 District 7610 Foundation Giving Report (6/6/2024)

Club	Size on 7/1/23	Annual Fund Goal Posted to RCC	Annual Fund		% AF Goal On Target	AF PerCapita		PolioPlus Goal Posted to RCC	Polio		Total Giving	Giving Banner (23-24)	EREY Banner (23-24)
			\$5,000+	\$10,000+ \$25,000+		\$100+	\$200+ \$500+		\$1,500+	\$5,000+ \$10,000+			
Albemarle County	38	\$2,000.00	\$1,000.00	50%	\$26.32	\$1,000.00	\$200.00	\$35,285.16					
Alexandria	90	\$20,000.00	\$28,666.00	143%	\$318.51	\$10.00	2,597.00	\$31,818.00					
Alexandria Central	30	\$1,000.00	\$7,535.00	754%	\$251.17	\$500.00	\$530.00	\$8,065.00					
Alexandria South	14	\$500.00	\$585.00	117%	\$41.79	\$40.00	\$40.00	\$650.00					
Alexandria West	5	\$500.00	\$2,300.00	460%	\$460.00	\$50.00	\$50.00	\$2,350.00					
Annandale	15	\$7,000.00	\$7,319.00	105%	\$487.93	\$100.00	\$0.00	\$7,319.00					
Arlington	38	\$2,000.00	\$2,090.00	105%	\$55.00	\$10.00	\$600.00	\$2,690.00					
Bailey's Crossroads	66	\$10,000.00	\$15,481.50	155%	\$234.57	\$2,500.00	\$4,550.00	\$20,031.50					
Blue Ridge Mountains	80	\$1,500.00	\$1,554.00	104%	\$19.43	\$500.00	\$1,190.00	\$2,769.00					
Broadlands-Dulles South	29	\$500.00	\$618.00	124%	\$21.31	\$10.00	\$25.00	\$643.00					
Centreville and Chantilly	19	\$500.00	\$4,360.00	872%	\$229.47	\$500.00	\$985.00	\$5,345.00					
Charlottesville	29	\$0.00	\$6,620.00	—	\$228.28	\$0.00	\$2,675.00	\$39,295.00	Y	Y			
Crystal City-Pentagon	41	\$20,000.00	\$30,928.00	155%	\$754.34	\$2,000.00	\$2,080.00	\$33,008.00					
Culpeper	23	\$1,000.00	\$1,635.00	164%	\$71.09	\$50.00	\$1,000.00	\$2,635.00					
Dulles International Airport	24	\$1,000.00	\$12,284.00	1,128%	\$511.83	\$500.00	\$1,500.00	\$13,784.00					
Dunn Loring-Merrifield	25	\$3,000.00	\$3,907.63	130%	\$156.31	\$250.00	\$0.00	\$3,907.63					
E-Club of District 7610	26	\$3,000.00	\$4,025.00	134%	\$154.81	\$500.00	\$400.00	\$4,425.00					
E-Club of Global Peacebuilders	15	\$8,000.00	\$15,114.50	189%	\$1,007.63	\$1,500.00	\$2,190.00	\$27,759.50					
Fairfax	60	\$14,000.00	\$14,498.55	104%	\$241.64	\$2,000.00	\$2,353.00	\$16,851.55	Y	Y			
Falls Church	16	\$500.00	\$1,100.00	220%	\$68.75	\$500.00	\$600.00	\$1,700.00					
Fredericksburg	101	\$10,000.00	\$13,076.00	131%	\$129.47	\$2,525.00	\$4,910.00	\$17,986.00					
Gainesville-Haymarket	43	\$8,500.00	\$8,763.00	103%	\$203.79	\$3,000.00	\$4,225.00	\$12,988.00					
Gloucester	34	\$600.00	\$3,300.00	550%	\$97.06	\$600.00	\$700.00	\$4,050.00					
Great Falls	62	\$8,250.00	\$17,511.00	212%	\$282.44	\$3,000.00	\$3,000.00	\$21,866.00					
Herndon-Reston	44	\$10,505.00	\$12,130.04	115%	\$275.68	\$6,275.00	\$6,425.00	\$19,555.04					
King George-Dahlgren	15	\$850.00	\$1,020.00	120%	\$68.00	\$10.00	\$25.00	\$1,045.00					
Lake Ridge	33	\$0.00	\$4,395.00	—	\$133.18	\$1,500.00	\$775.00	\$5,420.00					
Leesburg	60	\$8,000.00	\$8,965.00	112%	\$149.42	\$1,500.00	\$1,692.00	\$10,657.00					
Leesburg-Daybreak	29	\$11,800.00	\$12,349.00	105%	\$425.83	\$750.00	\$780.00	\$13,129.00					
Louisa County	11	\$500.00	\$596.66	119%	\$54.24	\$10.00	\$12.00	\$608.66					
Manassas	43	\$3,000.00	\$3,805.00	127%	\$88.49	\$700.00	\$700.00	\$4,505.00					
Manassas-Bull Run	19	\$0.00	\$1,400.00	—	\$73.68	\$0.00	\$172.00	\$1,572.00					
Mathews	29	\$3,100.00	\$0.00	0%	\$0.00	\$1,500.00	\$0.00	\$525.00					
McLean	47	\$19,000.00	\$20,878.00	110%	\$444.21	\$2,500.00	\$2,800.00	\$28,178.00					
Middlesex County	13	\$1,000.00	\$2,350.00	235%	\$180.77	\$100.00	\$1,100.00	\$4,450.00	Y	Y			
Mount Vernon	9	\$2,000.00	\$6,100.00	305%	\$677.78	\$500.00	\$0.00	\$6,100.00					
North Stafford	13	\$1,500.00	\$2,170.00	145%	\$166.92	\$500.00	\$49.00	\$2,219.00					
Orange	39	\$5,000.00	\$6,400.00	128%	\$164.10	\$25.00	\$75.00	\$6,475.00					
Purcellville	21	\$0.00	\$6,180.00	—	\$294.29	\$0.00	\$550.00	\$6,730.00	Y	Y			
Rappahannock-Fredericksburg	117	\$24,000.00	\$36,595.00	152%	\$312.78	\$1,400.00	\$1,497.00	\$48,092.00					
Rosslyn-Fort Myer	11	\$0.00	\$1,345.00	—	\$122.27	\$0.00	\$100.00	\$2,345.00					
Springfield	17	\$5,000.00	\$6,347.50	127%	\$373.38	\$2,000.00	\$2,562.50	\$9,060.00					
Stafford	34	\$13,000.00	\$15,571.00	120%	\$457.97	\$4,000.00	\$4,533.00	\$20,104.00					
Sterling	9	\$1,500.00	\$1,160.00	77%	\$128.89	\$350.00	\$350.00	\$1,510.00					
Tappahannock	39	\$3,900.00	\$4,120.00	106%	\$105.64	\$400.00	\$473.00	\$4,593.00	Y	Y			
the Northern Neck (KIWS)	31	\$0.00	\$550.00	—	\$17.74	\$0.00	\$700.00	\$1,250.00					
Tysons Corner	25	\$2,000.00	\$6,010.00	301%	\$240.40	\$2,500.00	\$2,620.00	\$9,630.00					
Vienna	63	\$17,000.00	\$18,390.00	108%	\$291.90	\$5,250.00	\$5,420.00	\$27,010.00					
Warrenton	69	\$13,000.00	\$14,305.15	110%	\$207.32	\$200.00	\$1,200.00	\$17,525.15					
Warsaw	22	\$3,000.00	\$0.00	0%	\$0.00	\$400.00	\$100.00	\$100.00					
West Point	16	\$1,000.00	\$855.00	86%	\$53.44	\$1,000.00	\$684.00	\$1,539.00					
West Springfield	33	\$16,500.00	\$10,450.00	63%	\$316.67	\$2,000.00	\$2,135.00	\$12,585.00					
Woodbridge	40	\$500.00	\$10,025.00	2,005%	\$250.63	\$500.00	\$4,200.00	\$14,225.00					
Other dist. related contributions	—	—	\$1,965.02	—	—	—	\$2,127.00	\$4,092.02					
District Totals	1,874	\$290,005.00	\$420,698.55	145%	\$224.49	\$57,515.00	\$80,256.50	\$602,050.21	5	5			

Contact District 7610's Rotary Foundation Team to Assist Your Club

Foundation team can help with grants, scholarships, training teams, polio, and annual and planned giving.

District Rotary Foundation Chair

PDG Pat Borowski
paborowski@cox.net

Area Foundation Advisors:

Area 1: Administration

Polly Rosenstein
prosenstein@gmail.com

Area 2:

VACANT

Area 3: Northern Neck: Kilmarnock-Irvington-White Stone, Middlesex County, Northern Neck, Tappahannock & Warsaw

Bill Croxton
croxco@gmail.com

Area 4:

VACANT

Area 5: Wine Country: Culpeper, Gainesville-Haymarket, e-Club of Global Peacebuilders & Warrenton

Dan Kasmierski
dkasmierski@gmail.com

Area 6:

VACANT

Area 7: Alexandria/Mount Vernon:

Alexandria, Alexandria South, Alexandria West, Mount Vernon & Rotary E-Club of D7610

John O. Woods
jwoodsjrpe@icloud.com

Area 8

VACANT

Area 9: East Central Fairfax County/

Fairfax City: Arlington, Bailey's Crossroads, Crystal City-Pentagon, Fairfax & Rosslyn-Ft. Myer

Pauline Rosenstein
prosenstein@hotmail.com

Area 10: Northeast Fairfax County:

Dunn Loring-Merrifield, Falls Church, McLean, Tysons Corner & Vienna

Vance Zavela
Vance.zavela@gmail.com

Area 11

VACANT

Area 12

VACANT

Foundation Stewardship Chair

PDG Travis White
traviswhite@cox.net

Foundation Treasurer

Dave Mercer
dsmerc@cox.net

Foundation Newsletter Senior Editor

PDG Juanita Cawley
pdg7610jcawley@cox.net

Foundation Newsletter Co-editor

Bill Cawley
bcawley@cox.net

Annual Giving Chair

Cheri Maea
cmaea2000@gmail.com

Paul Harris Society Chair

PDG Ronnie Chantker
rmccpa97@aol.com

Major Gifts & Planned Giving Chair

Suzanne McDougall
spm7610@gmail.com

Endowment Fund & PolioPlus Society

PDG Sandy Duckworth
pdg7610@gmail.com

PolioPlus

PDG Chuck Davidson
Chuck.nita1@gmail.com

Global Grants Chair

Andrew Wade
andrewwade@gmail.com

District Grants Chair

Wallicia Gill
Wallicia.gill@gmail.com

Scholarships Chair

Chris Elliott

Scholarships Assistant

Jenna Edwards

Peace Fellowships Chair

Cheryl Macias
cmacias9502@verizon.net

Peace Fellowships Ass't. Chair

Sally Lay
sallylay70@gmail.com

District Peacebuilder Chair

Bill Cawley
bcawley@cox.net

District Foundation Public Image Contact

Dave Borowski
dfborowski@cox.net

Rotary Support Center

A team of Foundation specialists is available to help you. Specialists answer calls Monday through Friday from 9 a.m. to 6 p.m. EDT. Call 866-9ROTARY (866-976-8279) or E-mail at RotarySupportCenter@rotary.org

Call 866-9ROTARY (866-976-8279)
RotarySupportCenter@rotary.org